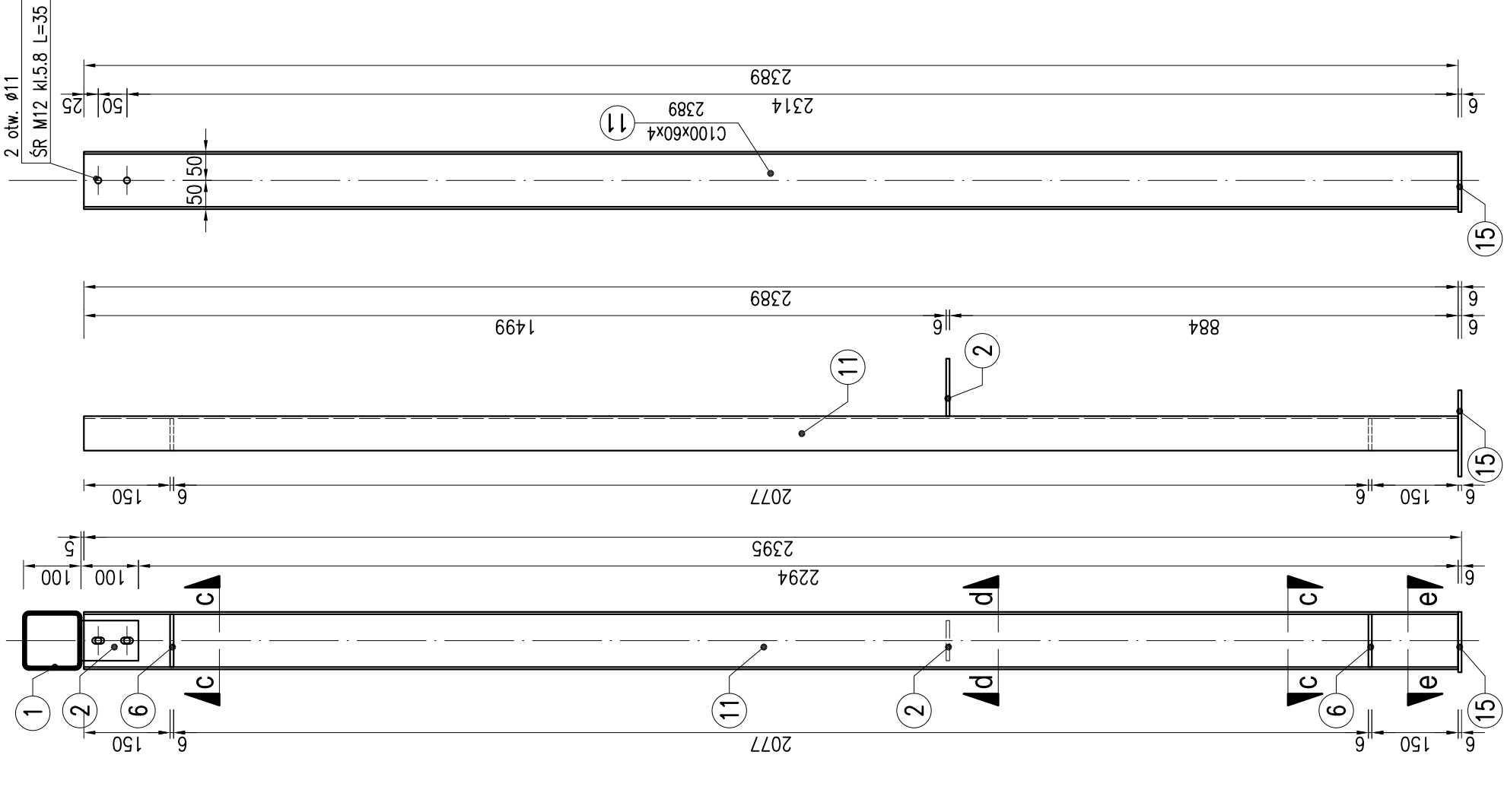
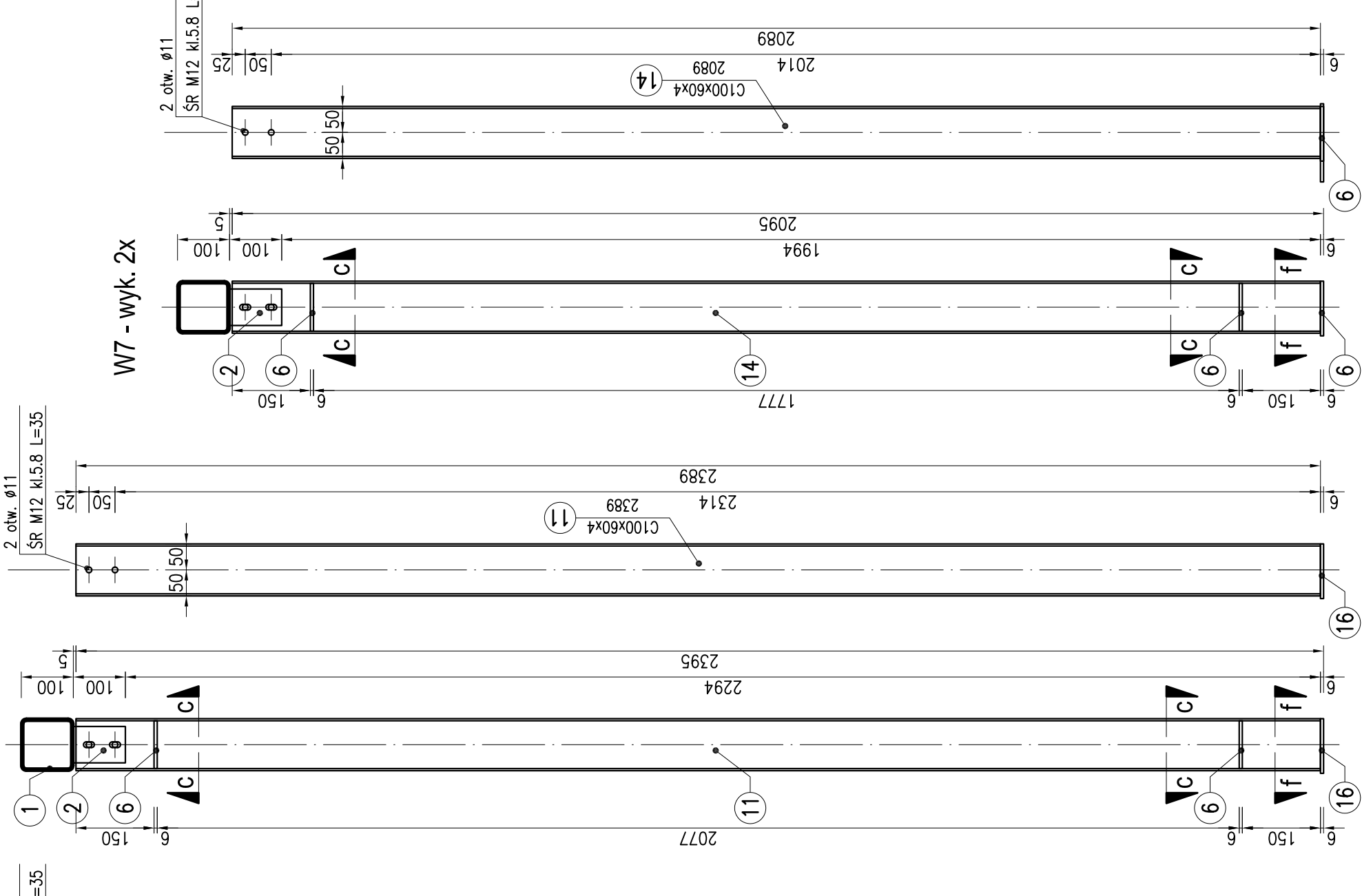


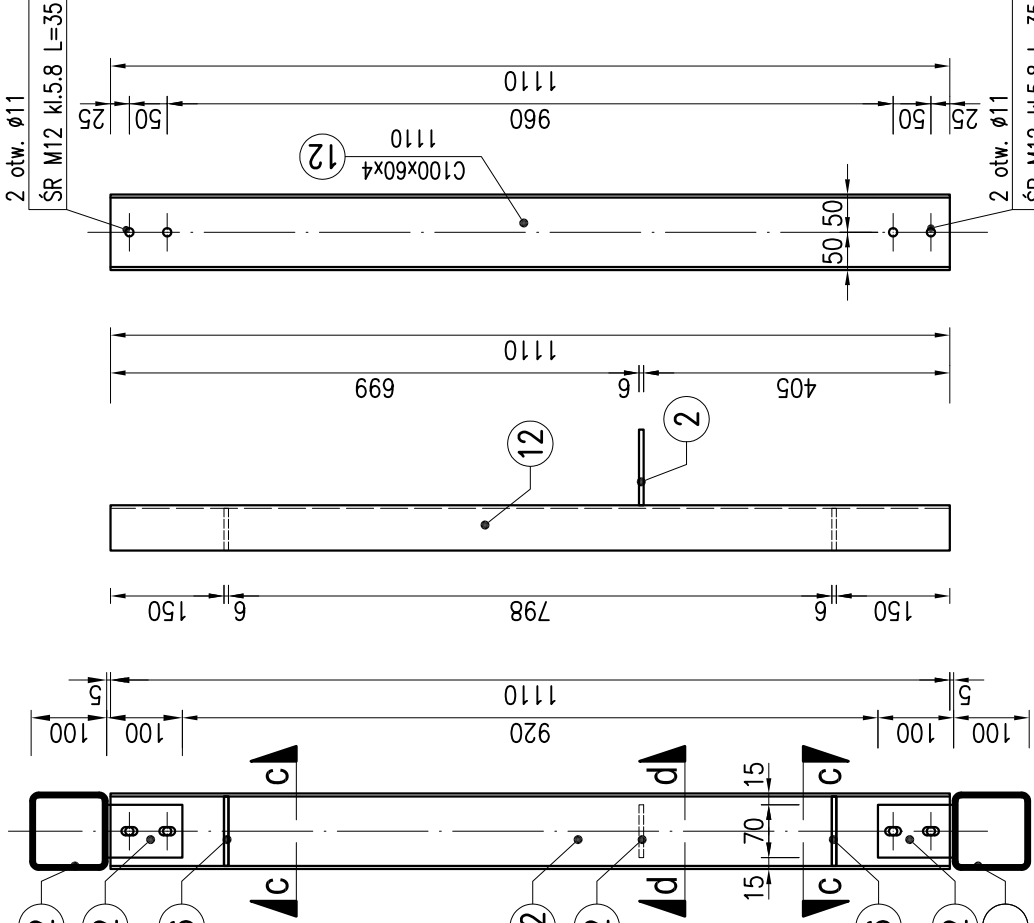
W3 - wyk. 1x, W3* - wyk. 1x



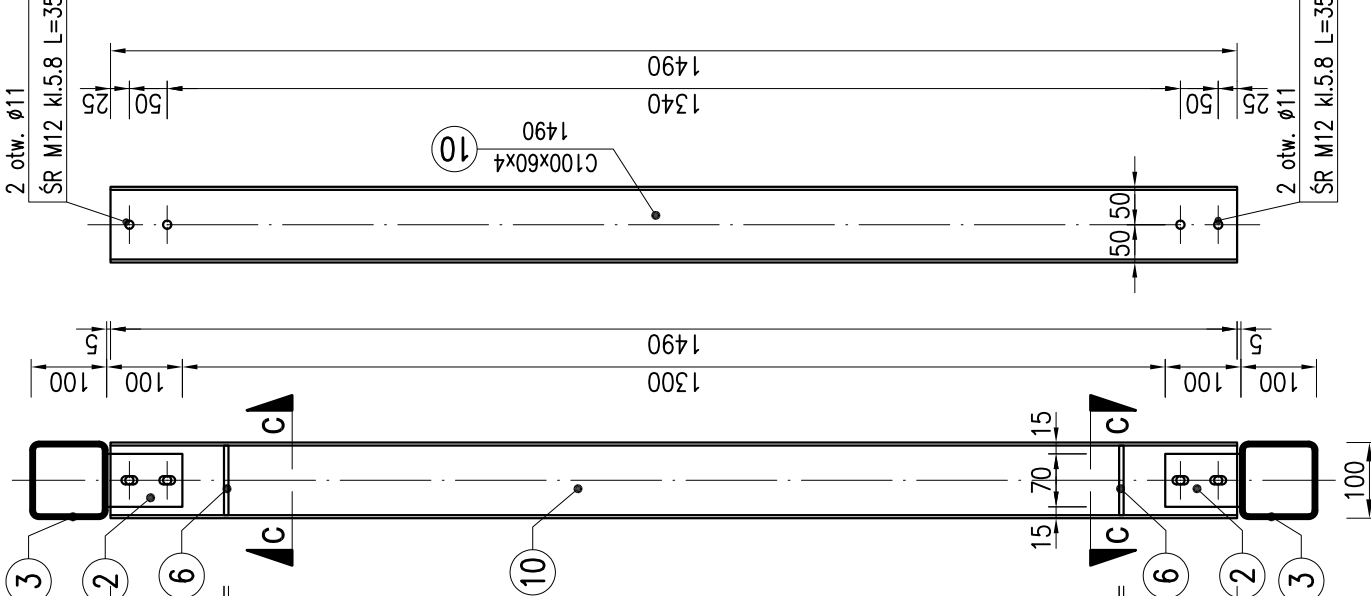
W4 - wyk. 1x, W4* - wyk. 1x



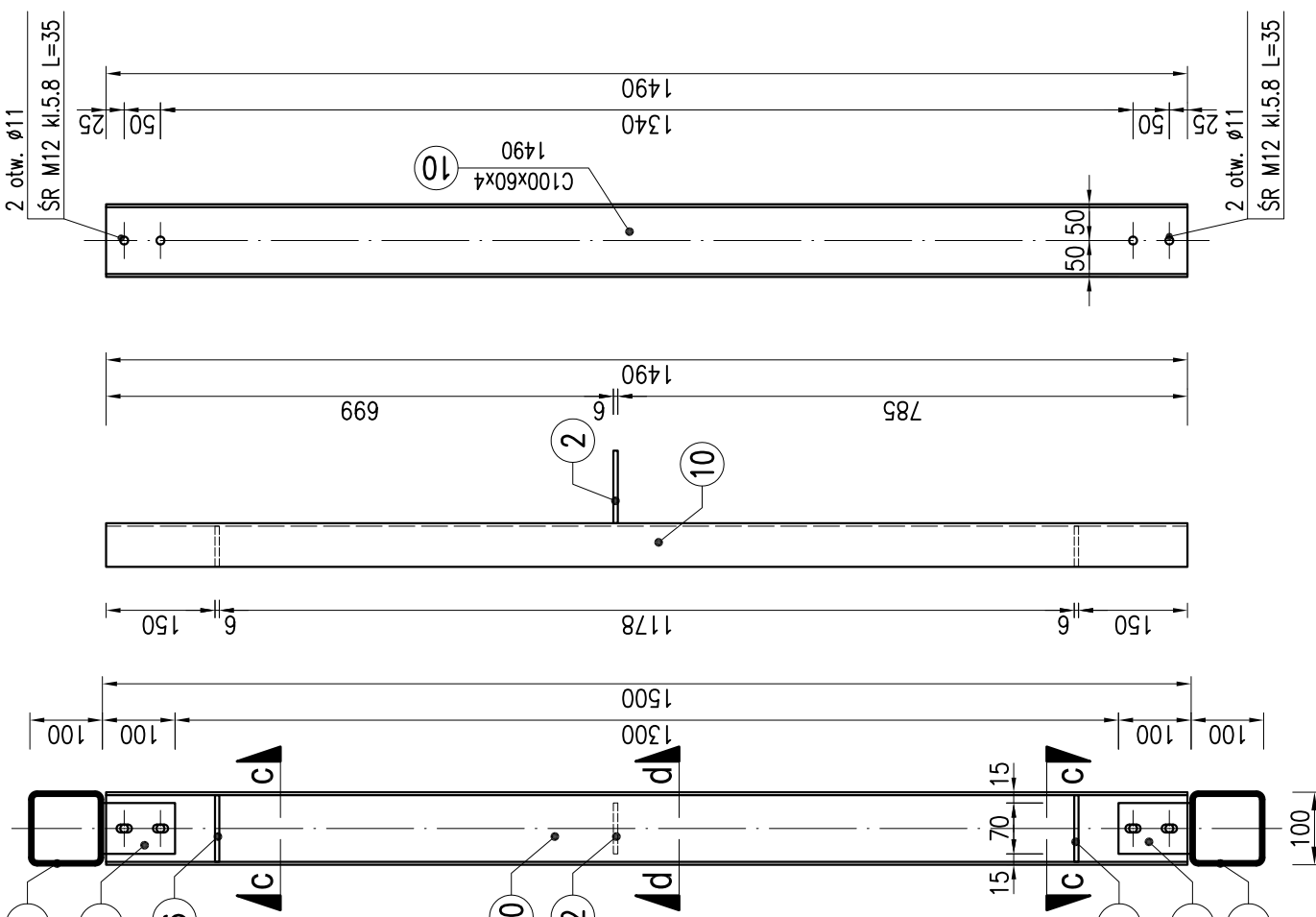
W5 - wyk. 2x



W1 - wyk. 35x

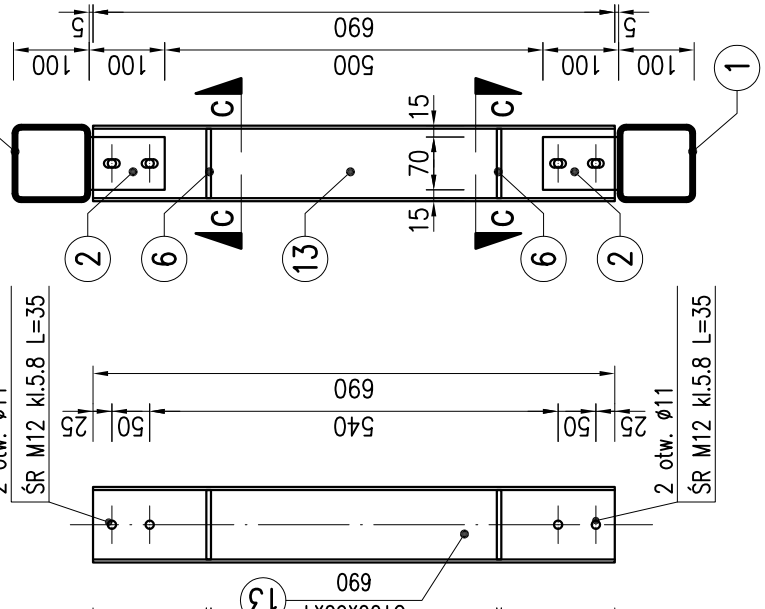


W2 - wyk. 2x

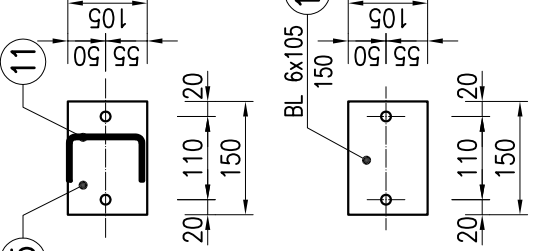


Zestawienie stali profilowej						
Nr elem.	Przekrój mm	Długość mm	Ilość szt.	Masa 1mb	Masa	Gatunek stali
				kg/m	kg	
W1 –wyk.35x						
6	BL 6x56	92	2	2.64	0.49	S235
10	C 100x60x4	1490	1	6.38	9.51	S235
W2 –wyk.2x						
2	BL 6x70	100	1	3.30	0.33	S235
6	BL 6x56	92	2	2.64	0.49	S235
10	C 100x60x4	1490	1	6.38	9.51	S235
W3 –wyk.1x, W3* –wyk.1x						
2	BL 6x70	100	1	3.30	0.33	S235
6	BL 6x56	92	2	2.64	0.49	S235
11	C 100x60x4	2389	1	6.38	15.24	S235
15	BL 6x105	150	1	4.95	0.74	S235
W4 –wyk.1x, W4* –wyk.1x						
6	BL 6x56	92	2	2.64	0.49	S235
11	C 100x60x4	2389	1	6.38	15.24	S235
16	BL 6x105	150	1	4.95	0.74	S235
W5 –wyk.2x						
2	BL 6x70	100	1	3.30	0.33	S235
6	BL 6x56	92	2	2.64	0.49	S235
12	C 100x60x4	1110	1	6.38	7.08	S235
W6 –wyk.4x						
6	BL 6x56	92	2	2.64	0.49	S235
13	C 100x60x4	690	1	6.38	4.40	S235
W7 –wyk.2x						
2	BL 6x70	100	1	3.30	0.33	S235
6	BL 6x56	92	2	2.64	0.49	S235
14	C 100x60x4	2089	1	6.38	13.33	S235
				Razem	500.51	

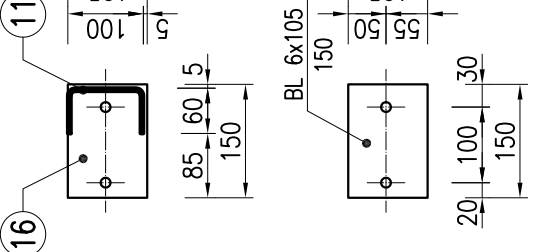
W6 - wyk. 4x



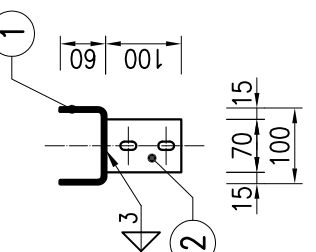
e-e



f-f



d-d



c-c

